

BAY AREA WOODWORKERS ASSOCIATION

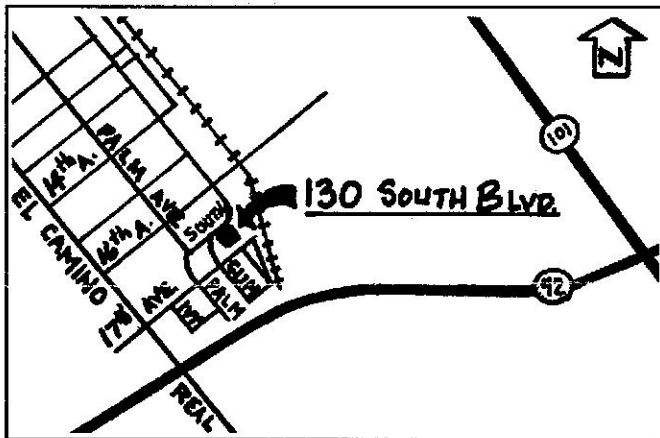
MEETING ANNOUNCEMENTS DECEMBER 1998

December 17 Meeting

3rd Thursday

REFRESHMENTS 7:00PM MEETING STARTS 7:30PM

This month will be our annual **Holiday Pot Luck Dinner** at American Legion Post #82. Bring enough food to feed 6 people according to the schedule listed below. The Club will provide plates, cups, napkins, utensils, coffee and soft drinks. Also bring a favorite project you've completed this year for "Show and Tell," and bring your **'Toys for Tots'** Toys for collection. We'll also be electing officers and committee chairs. **SPOUSES AND OTHER GUESTS ARE WELCOME.**



AMERICAN LEGION POST #82

130 South Boulevard, San Mateo

Last name: Food to Bring:(for 6 people):

A - F	Appetizer/Side Dish
G - K	Salad
L - Ra	Main Dish
Re - Z	Dessert

There is ample street parking. Please do not use the side entrance off the parking lot, instead enter our meeting room directly by using the street side entry.

OFFICERS

President Mike Bray 510/595-8168
 Vice Pres. Frank Hungler 650/343-9559
 Secretary Tony Fanning 650/323-1183
 Treasurer Linda Salter 650/365-4093
 Newsletter Craig Mineweaser .. 408/926-1900

COMMITTEE CHAIRPERSONS

Program Stan Booker 510/522-7879
 Hospitality Gene Wagg 510/527-5805
 and Don Wagg 510/769-8901
 Membership .. Pending
 Shows Pending
 Outreach Arnie Champagne . 415/282-1704
 Librarian Rodney Finlay 650/349-3766

For any questions or information about BAWA programs, contact Stan Booker (evenings).

LAST MEETING

by The Editor

The November meeting was held in the woodshop of the California College of Arts & Crafts. New member **Norm Paris**, who was attending with his wife June, announced this was his second meeting. Norm is interested in cabinet making and furniture. Newsletter Editor **Craig Mineweaser** apologized if anyone didn't get their newsletter in time, as mailing them was held off as long as possible in order to get confirmation of tonight's meeting place. Treasurer **Linda Salter** stated we currently have \$736.01 in our account. Program Chair **Stan Booker** said that boxmaker **Tony**

(continued on page 8)

Upcoming 1999 BAWA Meetings

Jan. 21 - Maybe Tony Lydgate, Boxmaker. Exact program and place T. B. A.

Feb. 18 - T. B. A.

Have ideas for programs for '99? Call Arnie Champagne at 415/282-1704. Make our meetings what you want them to be!

MEMBER FAVORITES

Have you got a favorite place for buying tools, lumber, supplies, etc.? Let the editor know so it can appear in this list.

Lumber, etc.

Craig Mineweaser's Pick:

Jackel Enterprises, supplier of fine lumber, veneers, moldings, and architectural elements, has just moved to Watsonville at 347 Locust St. New phone 831/768-3880.

Veneer Vacuum Equipment

Craig Mineweaser's Pick:

Vacuum Pressing Systems Inc., Mail order from 207/725-0935. They supply bags, pumps, plates, tubing, etc. - You saw one in use in the corner of the shop at the Nov. meeting.

(Note: This is not an endorsement by BAWA. It is the sole opinion of the member(s) listed.)

Soon we would like to collect these "picks" and publish them as part of a list to give to members when they first join or re-new. So call or send additional ones to the editor! (See form on page 3.)

SEND IT IN

Have something you want published in this newsletter? Tell our members about Ideas for future meetings, photographs, announcements, exhibits, shows or events. Or let the editor know if a mistake has been made.

Send to:

BAWA Newsletter Editor

3251 Almansa Court

San Jose, CA 95127-1001

or

408/926-1900 voice

408/926-7078 fax

researchem@msn.com e-mail

Next issue DEADLINE:

December 30, 1998

"THE PRESIDENT IS ON THE LINE!"

A letter from our President, Mike Bray

The "Meet BAWA Member:..." series that normally appears in this spot will return next month. (Editor)

Here we are at the end of 1998 already. Its time to look back on the year and see what we have accomplished. It is also time to look forward and get set for 1999. So here we go:

First of all I want to thank all of you who have helped BAWA be so fun and interesting. Time and space make it impossible to list all of those who deserve our appreciation. Our apologies to those not listed by name in the paragraphs below. Thanks to you all!

Craig Mineweaser has been a tirelessly inventive Newsletter editor and Membership info organizer. He also blackmailed me into running for the Presidency again. Where he got those photos of me and Hillary I'll never know! I also blackmailed him - into running for the Newsletter Editor position again. Tapping his phone really paid off!

Thanks also to **Linda Salter** for another year of sterling service as our Treasurer. Her humor, experience and sheer competency have been a great asset to the club. And she writes me checks!

I am sure we all appreciate our Librarian **Rodney Finlay's** toughness. He hardly skipped a beat after his loss at the hands of El Nino. We only wish he had let us help him recover a little...everyone was ready to not only give him some tools, but to grab a hammer and help him rebuild. I was impressed with all concerned.

Our Program Director **Stan Booker** has done a fine job again in his second year at the job. We even got to visit the workshop of a Super-model's dad. Our meetings have been all we could hope for. Thanks for a fine job Stan! Club members were helpful in giving Stan meeting ideas, and it worked out great! Stan will not be running for the position for 1999 - after serving as President (twice?) and program chair, Stan needs a break. So **Arnie Champagne** who has done a great job this past year as our Outreach Chair has volunteered for the position of Program Chair. **Jay Perrine** has offered to be his "back up." Please help them hit the ground running and start giving them your ideas about future meetings.

Although **Frank Hungler** hasn't been to as many meetings this year as he would have liked, he continued to help me behind the scenes. Also, **Tony Fanning** served this year as Secretary and since he did the newsletter last year, Craig says Tony gave him invaluable help throughout the year with the newsletter. Thanks to all of you!

We have been fortunate to have lots of people volunteering for club duties, but there are still a few spots open. We still need a new Refreshments Guy/Gal. Set up the coffee and bring donuts or whatever. It's a fun job, and there will always be people to help you unload. **Gene** and **Don Wagg** have been quietly and efficiently doing a great job of this for some time now- and fun as it is, they deserve a break.

At our December Potluck meeting we will be electing our officers and committee chairs for 1999. Please think about the slots left and be prepared to volunteer or to accept a draft. If there is any time left over it would be nice to have a few projects to look over and talk about. Please think about bringing a Show-and-Tell, and avoid those 'awkward silences'!

We put out the word that the club needed a computer, and darned if we weren't offered two! However, we are the club that cares, not the club that grabs, so we

(continued on page 3)

PRESIDENT'S LETTER

only accepted one. Thanks to both of our donors, though, for being so generous to the club. **Jim Voos** and **Jeff Preston** were the gentlemen we have to thank for being one big step closer to going "On-line."

We lost our meeting spot at *Tooland* and also the *Mainliner Club*. However, we are welcome to hold meetings at the *Hafele* showroom, the woodshop at *CCAC* and at *Jordan International*. As a matter of fact, *Jordan International* has even extended us Contractor's Pricing permanently. Just let them know you are a **BAWA** member (show 'em your **BAWA** club card) for substantial savings. I think that beats the *Mainliner* hands down. We also have access to the American Legion post where our December Meeting will be held. We may not have a permanent home yet but we have lots of options! Thanks to all of you who have helped give us so many choices.

Not only is our Video Library continu-

(Continued from page 2)

ing to grow, thanks to all of you, but our Reading Library seems on the verge of a big expansion. During the year **Craig Mineweaser** donated a large collection of *Fine Woodworking* magazines, we have quite a few books available and are about to get a regular supply of free new titles courtesy of *Woodwork* magazine. We may even be getting some small tools through the magazine! The next move will be to catalog the material so we can provide you with a list of what is available. We need a volunteer to do that. Do you have a few hours to spare? (Its okay to read on the job!)

There has been a lot of club activity this year, and there is a ton of stuff slated for the coming year. Now is the time to let us know what help you can offer to make it all happen. A little bit of time from a lot of different people makes it all go well.

See you at the Potluck Dinner - or if you can't make it, Merry Christmas and a Happy New Year! Thank you all for a great '98 and here's to '99!

THOSE "PICKS"

See the "Member Favorites" list on page 2? Well, soon we would like to collect these "picks" and publish them as part of a list to give to members when they first join or renew. So call or send additional ones to the editor. Find unusual places and send as many as possible!

Dear Editor: This is my favorite place to get tools, lumber, or

(circle one, or fill in blank)

because (what do you like about it?):

Their address, phone and/or web site:

Company

Street

City/State/Zip +4

Phone (____) _____ - _____

Website address

Send to: BAWA Newsletter Editor, 3251 Almansa Court, San Jose, CA 95127

TELL US ABOUT YOU!

**Your ad
here!!!!**

Beginning January 1999 we'll be offering ad spaces in this newsletter. For only \$100.00 per year (12 issues) you'll get a business card sized ad approximately the size shown above. Our newsletter goes to a very targeted audience of woodworkers who buy tools, supplies, lumber and materials, and who attend seminars and related events. So if you are a supplier or service provider and would like to reach this audience, all we need is "camera ready" copy 3 1/2" wide by 2" high. Call us for a quote on larger add spaces. Call the Newsletter editor at 408/926-1900.

POST XMAS PARTY!

New Year's Day Open House

1-5pm

on January 1, 1999

at

Linda Salter's House

2527 1/2 Graceland Avenue

San Carlos

All BAWA members welcome!

Call her at 650/365-4093 for
directions.

LAST MONTH'S PRESENTATION

by Craig Mineweaser

November's presentation took place in the woodshop of the California College of Arts and Crafts. We are extremely grateful to Professors Donald Fortesque and Peter Pierobon for allowing us to visit there - an excellent place to do 'hands-on' demonstrations. We also thank our member Glenn Krueg for sharing his work with us. (The Editor.)

Member Glenn Krueg is a very accomplished wood turner. Glenn's artistic turnings have been displayed in galleries in Carmel, Seattle, Albany, Burlingame, Berkeley, and in the Del Mano Gallery of fine woodworking in L.A. His show credits include last year's international competition displayed at the University of Cleveland. In a few months, Glenn and a friend will have a long awaited article appearing in a British wood turning magazine. He started his talk by showing several small and medium sized pieces of various types he had turned, including, Christmas tree ornaments (one even lights up!) and a variety of bowls. (See photo 1.) Some were intricate and delicate, some were wonderful displays of wood grain and structure, and all captured our attention.

Glenn then talked about different types of lathes. He recommends a 4-speed model at a minimum. New ones on the market have a variable speed DC motor instead of pulleys. "A variable speed is much better." Glenn then discussed and showed several types of collets for spindle turning. He discussed how to make your own. He said, "You can make your own screw chucks, but it's usually better to buy them." (Source: Craft Supplies in Provo, Utah 800/551-8875 - order through member Linda Salter for a discount 650/365-4093.)

Faceplate turning is used to make bowls and other objects. Glenn showed how to glue the wood you want to turn onto a waste block before screwing the block onto the faceplate. He uses instant setting cyanoacrylate liquid glue.

Glenn has made his own turning tools at times, so that he gets what he wants in order to do a particular operation.

He recommends David Elsworth's class on tool making so that you can make tools you need to cut out the interiors of bowls, etc. Glenn showed a variety of tools he's made including various bowl scrapers from 1/8" sq., 5 percent cobalt steel stock. He used cyanoacrylate glue to attach each of these tips at the proper angle onto a piece of water-hardened drill rod purchased from the hardware store. He says he found he regularly uses about 20 to 30 of the some 150 tools he owns, but this is because he does lots of specialty turnings. He showed a variety of scraper shapes and sizes. Glenn's basic tool is the Gouge. Long handled tools avoid "turner's elbow." He pointed out that the Skew which is generally only used for spindle turning, is a tool that's very difficult to use and you needn't waste time trying to master it when you're first starting. Glenn says to start you need three basic tools: the Gouge, and a Square and a Round Scraper. He then discussed the useful angles of various bowl scrapers and other tools shapes. Shear scrapers can be used to start the finishing process while the piece is still turning. This way you can start your finish sanding with 320-grit paper. Glenn showed three sizes of flexible rubber sanding disks with Velcro attachments for holding the sandpaper. These allow one to easily finish a bowl interior while it's spinning on the lathe.

Glenn repeatedly emphasized that there many ways to do each operation on the lathe. "All of them work, there's no right or wrong way." His point is that you should experiment and have fun. He says the only point of it all is that "you've gotta end up with a nice form." He discussed how to repair tear-outs by covering the spot with wax, putting on a sanding sealer (or if it's a deep tear, penetrating sealer

and epoxy filler), which you let sit overnight before completing the turning. He said you must look at each piece as you work it and let the beauty of the piece come out. However, he's not above enhancing a crack or other defect with black or red marking pen or the like so that after the finish goes on, it looks intentional.

Glenn then gave a demonstration on the lathe by gluing a small block to a waste block, mounting it on a faceplate and turning a small bowl. (See photos 2 and 3.) While he worked, he talked about the importance of cutting on the centerline of the piece, or above, and showed why it's necessary to keep the tool rest tight to the piece at all times. He suggested moving most lathes up to a more comfortable working level by building up the feet with blocks.

Then once he had the basic shape worked out, we got to take a turn. Some of us had never worked at a lathe before, but Glenn knew how to guide each of us so that the bowl still turned out as a nice piece, and we all had fun! Thank's Glenn for a great demonstration of your craft and art!

(continued on page 5)

Outreach Chair Arnie Champagne, always an enthusiastic supporter of our club encouraged and supported us this year to participate in 'Christmas in April,' 'Habitat for Humanity' and most of all in making 'Toys for Tots.' He deserves a big "Thank You!" next time you see him.

Also "Thanks" go to Librarian **Rodney Finlay.** At the beginning of the year he lost his house and all of his possessions in a flood. Our library of video tapes was lost too. But Rodney preserves and in the midst of putting his life back together, he's rebuilt our library to be better than before.

BAWA says "BRAVO!" and a heart felt thanks to both of you for your contributions. THANK YOU!

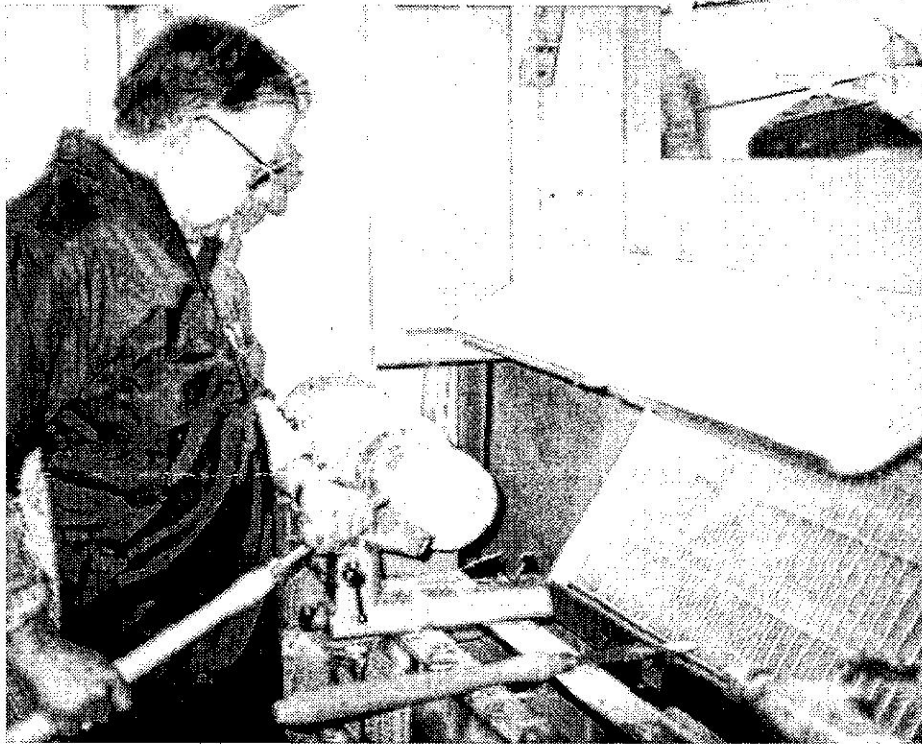
Help our library grow! If you have a woodworking video you no longer use, give it to our Librarian, Rodney Finlay (new no. 650/349-3766) as a donation to the library so others can view it.

LAST MONTH'S PRESENTATION

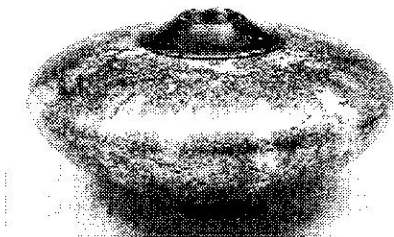
(continued from page 4)



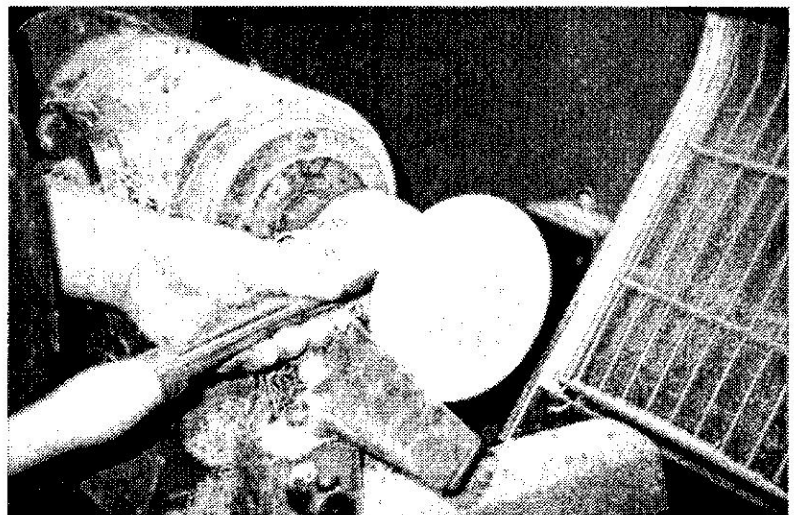
Glenn discusses some of the pieces he's turned and the tools he uses.
Photo 1



Glenn begins the shaping of the outer surface of a bowl. Note the position of his hands relative to the tool rest.
Photo 2



One of Glenn's gallery pieces. Although it doesn't show up well in this copy of the original photo, he's covered the outside with layers of paint and gold leaf making it look almost like a glazed piece of pottery. The effect of all this gold is absolutely stunning. Only one other turner in the world is doing this type of piece.
Photo 4



Glenn is cutting deeply into the bottom surface of the bowl. Again note the positions of both tool rest and hands.
Photo 3

FOR SALE

Members, if you've got a woodworking tool for sale, place your ad here. You know your item will go to a good home!

Wanted: Back issues of *Fine Woodworking Magazine*. Need issue no's. 8, 11 through 15, 17, 18 & 19. Call 650/341-6210.

Black Velvet Gift Boxes for pens or pencils. Supplied with a plastic liner to hold the pen, but look fantastic if you add your own liner. Quantity deals. 650/349-4156.

Delta 15" Scroll Saw. 1/10 hp, 1.6 amp motor. Seldom used. Xmas special \$75.00. Call 510/595-8168.

Hitachi P10F, 12" Thickness Planer with extra knives, bargain priced at \$500.00. 415/861-2453.

Plunge Router Base for Porter-Cable Router. Brand new. Fits model 690 fixed-base router, & will turn it into a plunge router - or change back and forth. \$70.00/obo. 510/522-7879.

Tubular Lathe, 36"-48" center-to-center, 3/4 hp, 3/4" drive. Best offer. **Woodworking Calculator, Construction Master IV Brand,** \$40.00 (sells for \$80 new.) Also an assortment of hand tools. 415/282-1704.

Ryobi BT3000 Table Saw. With outfeed table, 2 accessory tables, long miter fence, custom cabinet, router attachment and fence, and all accessories. A steal at \$300.00. 650/591-9035.

Yates American 8" Jointer. Classic Model B-19416 w/60" bed and orig 3 phase GE motor. Best Offer. 650/367-1922

PARTY CANCELLED

THE TOY MAKING PARTY

Dec. 11, 12, 13 at

Arnie Champagne's Shop

has been canceled due to the death of Arnie's father. We extend our sympathy to Arnie. You may call him after the 14th at 415/282-1704 to arrange for delivery of your completed toys, or to discuss how to finish them, etc.- or bring them to the next meeting. Please work among yourselves to complete as many 'Toys for Tots' as possible before Christmas.

page 6

LAST MEETING

(continued from page 8)

Show and Tell: **Bob Berryman** brought a pedestal plant stand of Black walnut which he made using plans from *Woodsmith* magazine (see photo 5 below.) Square in plan view, it stands about three feet tall and is decorated with Neo-classic style trim. He used a marble tile for the top. Bob described how he cut and placed the "Dentil blocks" ("the trick is to get them even at the corners") using a Dado blade on his table saw. He also described how he cut apart the flat boards he used for the sides and then glued them back together in a board on board pattern such that the grain pattern is almost continuous throughout. The most interesting feature was that one of the vertical sides swings open to reveal an interior storage space with adjustable shelving, suitable for video, CDs, etc. Bob finished the stand with a "Sam Maloof Finish" - Bob's favorite.

Mike Bray passed around a beautiful off-cut of straight-grained, old-growth cedar. This piece was part of a 2000 board foot shipment from Van Arsdale's (softwood) Lumber on Tunnel Avenue in San Francisco. This piece measuring 2x2x23" weighed only about 8 ounces. Ironically at the very moment Mike was showing us this piece, the just completed job it came from was being consumed in a shop fire. All that remains are the few offcuts Mike saved.



Bob's plant stand.

Photo 5

FOR RENT

Rent your very own

TORMEK SHARPENING

SYSTEM!

Remember as club members, you are eligible to rent our **Tormek Sharpening System** for a week! Several months ago the club purchased this unit complete with many different attachments. Using this set up, think of all the tools in your shop you can sharpen in that time. You can give a fine professional edge to your plane irons, jointer knives, shop and household knives, etc. So call **Stu Hoffer**, 650/946-3451 or e-mail him at stu@querylabs.com, to reserve a week of this machine for your very own. Your woodwork will instantly improve!

EDUCATION CORNER

Outreach Chair **Arnie Champagne** has announced two classes to be given at his shop in San Francisco. He will be giving two week-end 'intensives.' The first is titled **MARQUETRY** and the second is **MAKING A WOODEN PLANE**. Both are two full-day classes. At the end of each you leave with a usable piece or plane you have just constructed, and a lot of knowledge from Arnie about how to continue to do your own. These are planned for January '99 with a class size of about 6 each. If you've ever wanted to learn either or both of these skills, start now by giving Arnie a call 415/282-1704 for details on date, fee, what will be provided, etc.

Membership?

from the Editor

WHAT DOES BAWA DO FOR YOU?

Recent presenters at BAWA meetings have included Sandor Nagyszalanczy, Brain Boggs, Tony Lydgate, *Berkeley Mills*, *DeWalt Tools*, Jaap Romijn, and Yeung Chan to name just a few.

BAWA also has an extensive and growing video library, and is building a formidable book & periodicals library. We even have a *Tormek* Grinder for loan to members. As a member, you not only get access to all of this, you make some great woodworking friends who are always ready to help you with a word of encouragement or an acknowledgment of your success. If all of this is worthwhile to you, then sit down right now and fill out the form to the right to join or to renew. Then either **bring it with your check** to the next meeting and give it to the treasurer, or mail them to her at the address listed below.

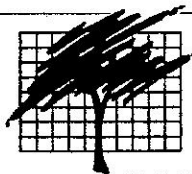
If you're a new member, welcome!

If you're renewing, thank you, and remember we still need the info, so fill out the form and send it in.

BAWA: Who We Are

The Bay Area Woodworkers Association was formed in 1982 by a small group of dedicated people who felt the need to strengthen the woodworking community by holding regular meetings, establishing an informal forum for the exchange of knowledge and ideas, sponsoring shows and meeting others in woodworking and related fields. Since then, this non-profit organization has grown to many members.

BAWA meets on the third Thursday of the month at 7:00 PM. Meetings usually have a specific topic, such as router techniques, finishing, turning, or business aspects of woodworking; or focus on a distinguished guest speaker who gives a presentation in his area of expertise. Meetings are held at wood-working shops and businesses in the Bay Area or at a permanent club meeting place (as soon as a new one is found - See notice on page 8.)



BAY AREA
WOODWORKERS
ASSOCIATION

Membership Application / Renewal

Name _____

Address _____

City _____ State _____ Zip +4 _____

Work Phone () _____

Home Phone () _____

Profession: _____

Speciality/Interests (List): _____

Skill Level: ☐ Professional ☐ Amateur ☐ Beginner

☐ Please don't circulate my name/address to other organizations.

I would be willing to volunteer for:

- | | |
|--|---|
| <input type="checkbox"/> Elected Officer | <input type="checkbox"/> Greeter for Guests/New Members |
| <input type="checkbox"/> Program Committee or Chairman | <input type="checkbox"/> Hospitality for Guest Speakers |
| <input type="checkbox"/> Special Events Coordinator | <input type="checkbox"/> Meeting Set-Up/Clean-Up |
| <input type="checkbox"/> Organize Tours-Woodworkers' Shops | <input type="checkbox"/> Making <i>Toys for Tots</i> projects |
| <input type="checkbox"/> Trade Show Staff | <input type="checkbox"/> Outreach and Community Projects |
| <input type="checkbox"/> Show and Exhibit Coordination | <input type="checkbox"/> Librarian for Video Library |
| <input type="checkbox"/> Newsletter articles or Editor | <input type="checkbox"/> Handling AV Equipment |
| <input type="checkbox"/> Publicity for BAWA in Local Press | <input type="checkbox"/> Other |

Check as many as you want, but check at least one.

BAWA Membership Dues

BAWA dues are currently \$25.00 for twelve months (family memberships are \$30.00). Your newsletter address label shows your renewal date.

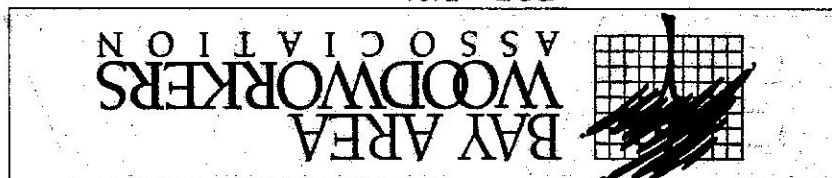
Membership can begin during any month of the year. Make check payable to BAWA. Bring it **AND THIS FORM** to the monthly meeting, or mail to:

BAWA TREASURER
2527 1/2 Graceland Avenue
San Carlos, CA 94070

Membership Application/Renewal

HOME FOR THE HOLIDAYS! Well, we would like to write that we have a permanent home, but we don't. Things are developing though. We've been invited to hold meetings at Jordan International three or four times a year, so that's a start. But if you know of a meeting place for 35-45 people, preferably in a West-Bay town, for free or very little money, please call **Mike Bray**, 510/595-8168.

San Mateo, CA 94402-5481
PO Box 5481



LAST MEETING

(continued from page 1)

Lydgate is tentatively scheduled for our January 21 meeting. Stan said Tony has displayed his boxes in galleries "all over California" and that Tony also sells hardwood lumber. Outreach Chair **Arnie Champagne** reminded all of the Toymaking Party at his shop in December (see notice on page 6.) President **Mike Bray** made a spirited appeal for volunteers for officers and committee chairs for 1999. Several members who've taken a turn chimed in with comments about the rewards of doing one of these jobs and how much more one can learn about our club, our members and the world of woodworking by taking one of the positions. Mike then opened the floor to nominations and volunteers. The results, as of the end of the meeting are:

Candidates for the Board:

President - Mike Bray

Vice President - Linda Salter

Treasurer - Tony Fanning

Secretary -

Newsletter - Craig Mineweaser

Candidates for Committee Chairs:

Program - Arnie Champagne
assisted by Jay Perrine

Hospitality -

Membership -

Shows -

Outreach -

Librarian - Rodney Finlay

The election of officers and committee chairs will take place at the December meeting. Mike went on to announce that *Jordan International*, our host for the October meeting, would like to have us return 3 or 4 times a year for meetings, and give us contractor prices on their hardwoods at any time - just use your membership card to obtain this discount. (If you didn't get a membership card yet, call Treasurer

Linda Salter, at 650/365-4093 or see her at the next meeting. Editor) Mike also asked that all members think about what prizes will be needed for next years **2 x 4 Contest**. Stan announced he's reinstituting door prizes (no charge) and raffle prizes (suggested donation) starting with tonight's meeting. Tonight's door prizes were a drill bit set and a miniature Swiss army knife. The raffle prize is a *Ryobi Detail Sander* and will be given away at a future meeting when enough tickets have been sold to at least cover the cost of the item. Other announcements included: *Whole Earth Access* in Berkeley is offering 10-30% off tools during their going-out-of-business sale.

(continued inside on page 6)